

OPTIMUS NOVA - the awardwinning legendary multifuel expedition stove

PRODUCT CHARACTERISTICS

Fuel type:	White gas, Kerosene, Diesel and Jet Fuel
ø Burn time:	150 minutes max. at full power (450 ml fuel)
ø Boil time:	3.5 minutes for 1 L water (approx.) depending on climate, altitude etc.
Power:	2'850 Watt 9'725 BTU/h
Weight:	460 g including pump / 330 g without pump 16 oz including pump / 11 oz without pump
Dimensions:	140 x 80 x 65 mm (in operation) 140 x 110 x 70 mm (packing size) 5.5 x 3.1 x 2.5 in (in operation) 5.5 x 4.3 x 2.7 in (packing size)
Material:	Stainless steel, brass, aluminum
Accessories:	Pump, wind shield, multitool, transport bag, wear parts and lubricant (fuel bottle not included)

Article No.: 8016276 Optimus Nova
GTIN-13 Code: 7391812000825
GTIN-14 Code: 10879853000829 (Masterpack 6 pieces)

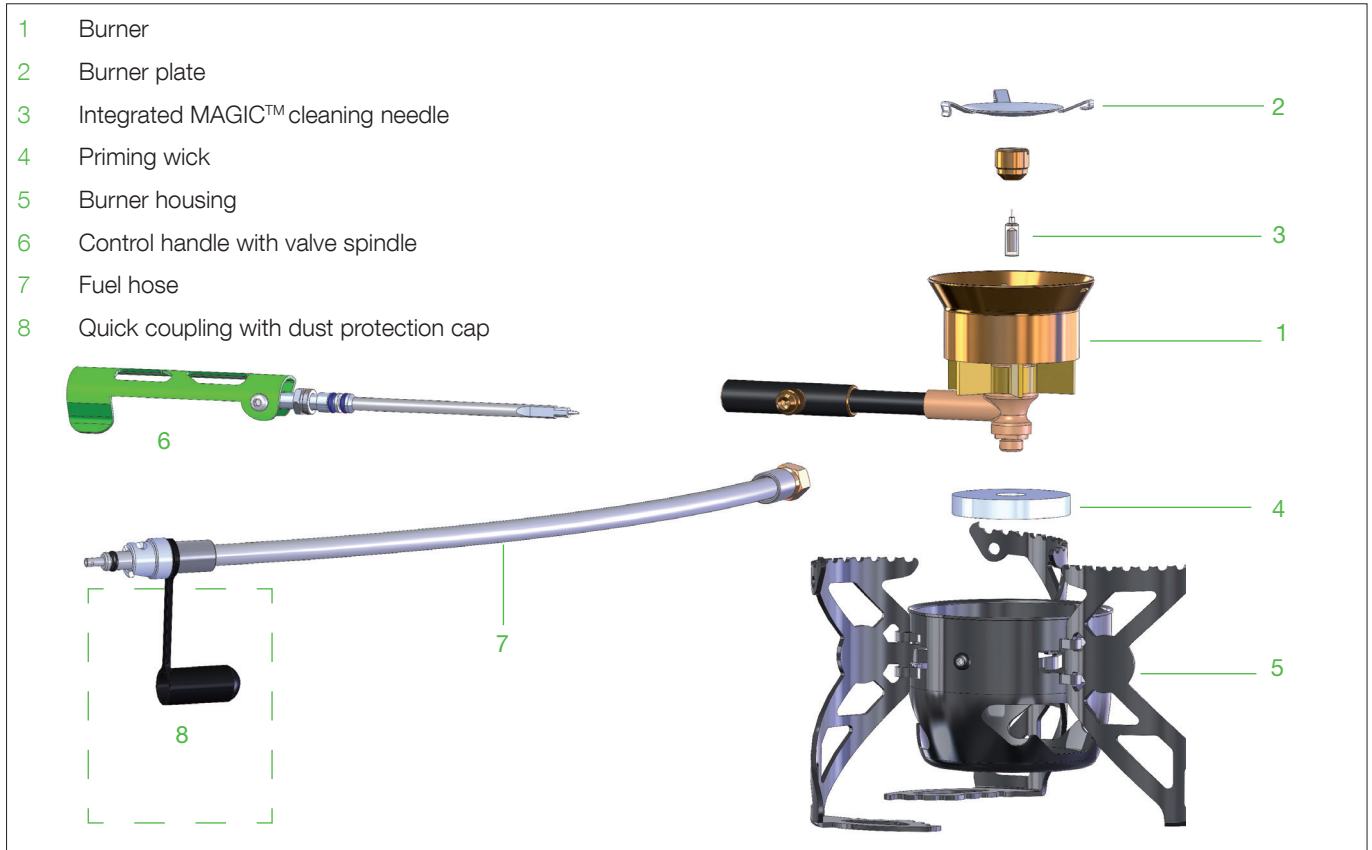


FACTS

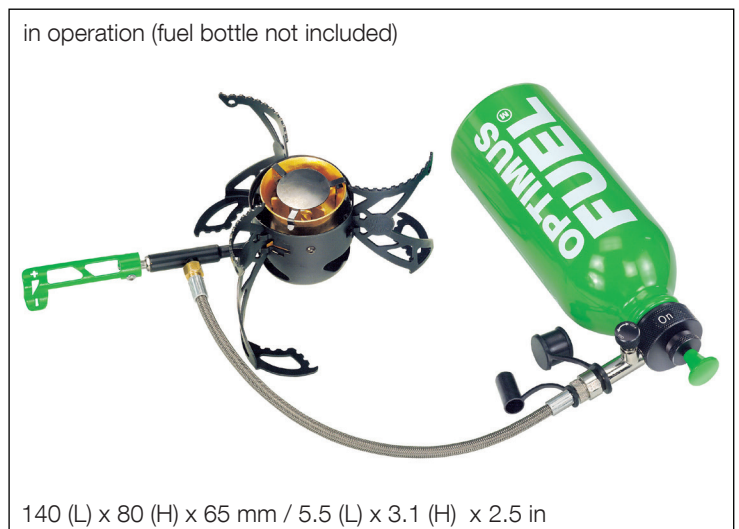
- Integrated MAGIC™ cleaning needle for quick and easy cleaning of the jet – even during cooking
- Burns all types of fuel - using same burner jet
- Legendary multi-fuel expedition stove
- Precise and instant flame control
- Durable aluminum pump and quick-action connections for more safety and convenience
- Self purging FLIPSTOP™ pump clears the burner of fuel and depressurizes the fuel bottle
- Quick priming burner requires less preheating and saves fuel
- Wind shield for increased performance
- Thanks to the collapsible turbine shaped pot support and a folding flame control the pack size is minimal
- Despite the small format Optimus Nova offers stability for large sized pots

OPTIMUS NOVA - the awardwinning legendary multifuel expedition stove

EXPLODED VIEW



DIMENSIONS



Katadyn reserves the right to modify product characteristics
Version: 24.09.2021

Katadyn Products Inc. | Pfäffikerstrasse 37 | 8310 Kempththal | Switzerland
Tel: +41 44 839 21 11 Fax: +41 44 830 79 42
info@katadyn.ch | www.optimusstoves.com